



Interactive Flat Panel Display

NE Series



TRANSFORMATIVE DISPLAY TECHNOLOGY FOR DYNAMIC ENGAGEMENT

The SNEOS Interactive Display is a state-of-the-art solution designed for dynamic classrooms and collaborative learning spaces. Powered by **Android 14**, it offers seamless connectivity, paper-like writing technology, and a robust 8GB RAM and 128GB ROM configuration. With its intuitive interface and advanced tools, the SNEOS Interactive Display redefines interactive education and enhances the learning experience.

Crafted for

MODERN CLASSROOMS AND WORKSPACES

1 Stunning Display Features

Immerse yourself in vibrant visuals with a high-resolution LED display (4K UHD) that ensures crystal-clear imagery. Equipped with an anti-glare and anti-fingerprint coating, the display delivers exceptional clarity while resisting smudges and reflections. A wide 178° viewing angle guarantees visibility from anywhere in the room, while durable toughened glass with zero air gap enhances screen strength and longevity.

4K
ULTRAHD

178°



2 Advanced Touch Technology

Experience seamless interactivity with high-precision infrared touch technology, supporting up to 40 simultaneous touchpoints. With an ultra-responsive touch time of just 3.4ms, the screen reacts instantly, creating an intuitive and engaging experience for users.



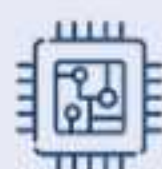
3 Sleek and Robust Build Quality

The ultra-thin bezel design delivers a modern and professional aesthetic, perfectly complementing any environment. Built with a strong, shock-resistant frame, the display ensures durability for long-term, heavy usage.



4 Exceptional Processor and Performance

Harness the power of a robust built-in processor, offering support for both Android and Windows operating systems. This dual compatibility provides flexibility for a wide range of applications, from classroom lessons to boardroom presentations.



5 Versatile Connectivity Options

Stay connected with an array of input/output ports, including HDMI, USB, Type-C, LAN, VGA, and RS232. Effortlessly mirror content across multiple devices for collaborative work, enabling seamless sharing between teachers, students, or team members.



6 Enhanced Audio Experience

Built-in high-quality stereo speakers (20W each) provide crystal-clear audio, ensuring every word and sound is heard, whether in an interactive lesson or a corporate presentation.

7 Energy-Efficient Design

Optimized for low power consumption, the display includes smart sleep modes and energy-saving features, allowing for extended usage while reducing electricity costs.

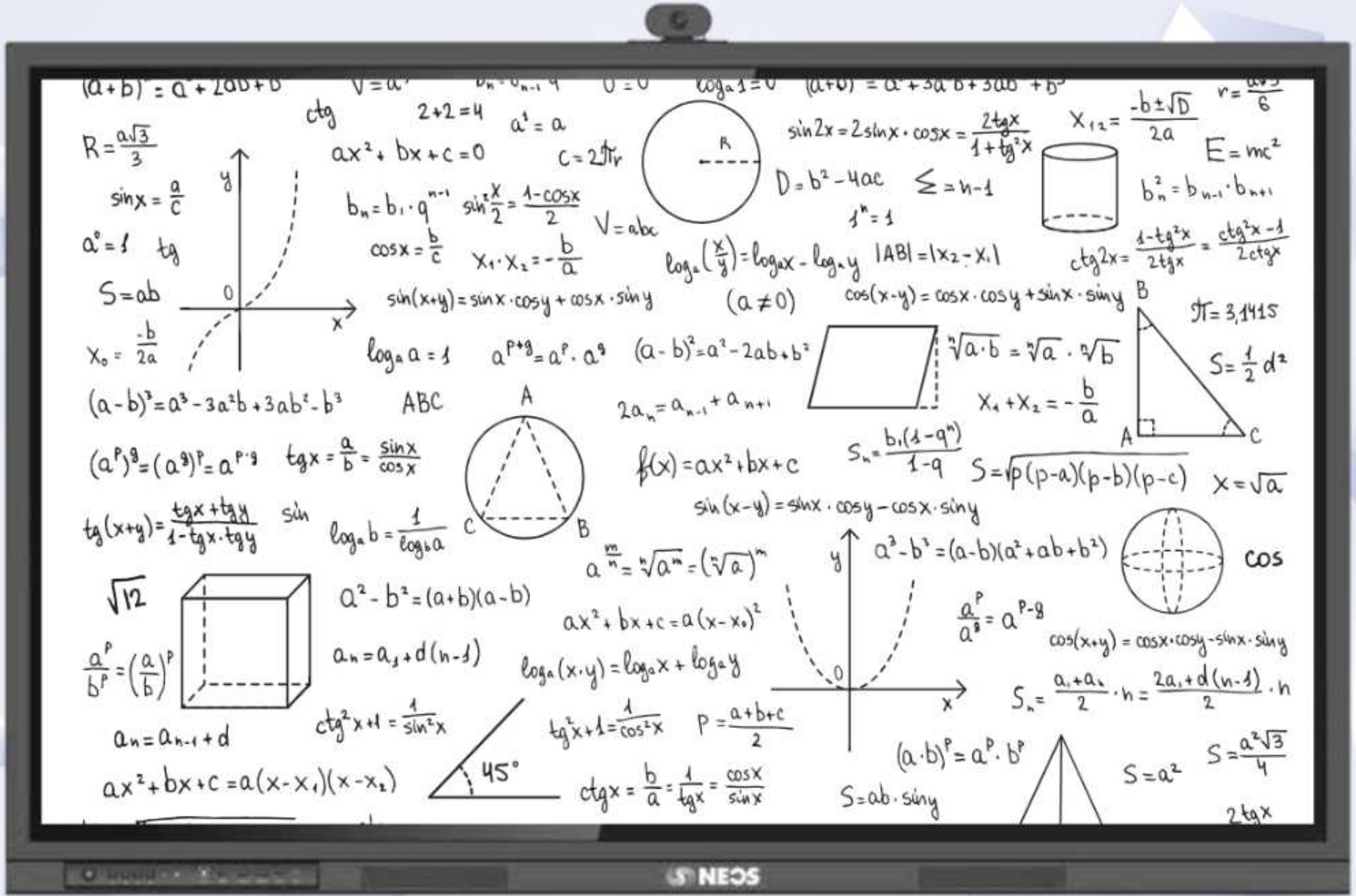


8 Deliver Excellence with Every Interaction

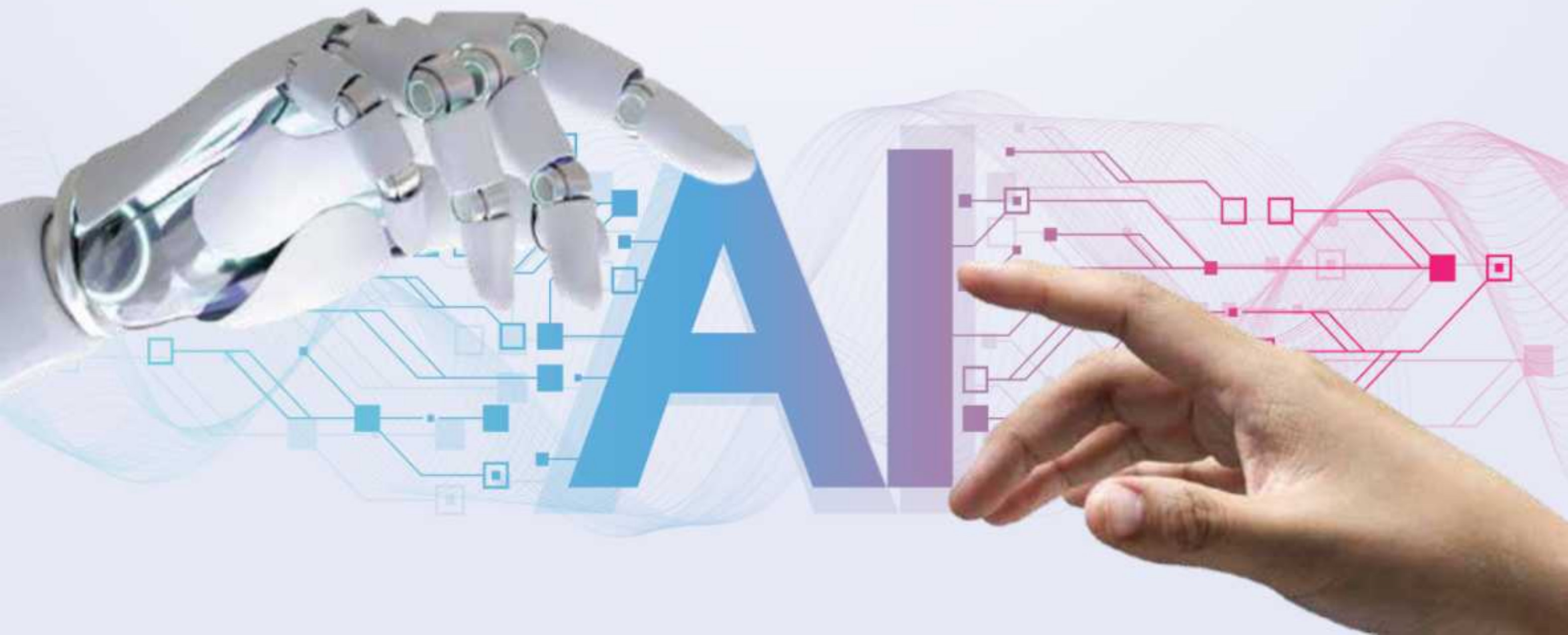
This cutting-edge solution is designed to elevate collaboration, engagement, and productivity in any setting.

REDEFINING WHITEBOARDING WITH AI

INDIA'S GROUNDBREAKING GPT-POWERED TECHNOLOGY



Step into the future of education with **Syntellec** – an advanced AI-driven whiteboarding solution featuring GPT and handwriting recognition. Seamlessly tackle equations, interpret chemical reactions, and delve into topics across mathematics, chemistry, physics, and beyond. **Syntellec** redefines learning by making it smarter, more interactive, and deeply engaging.



1 Unleash the Power of AI in Education

• Interactive Whiteboard:

Experience cutting-edge whiteboarding and annotation software that's intuitive, innovative, and perfect for dynamic classroom interactions.

• AI Pen for Intelligent Content Creation:

Elevate your presentations with smart recognition of shapes, images, text, and handwriting. Features include:

- ▶ Smooth Pen, Rainbow Pen, Dotted Line Pen
- ▶ Magic Pen, Handwriting Recognition Pen
- ▶ Shape Recognition Pen, Math Recognition Pen, Laser Pen

• Handwriting Recognition:

Effortlessly convert handwritten notes into digital text with support for over **194 global languages**, including **15+ regional languages** like Hindi, Tamil, Telugu, Marathi, Gujarati, and more.



2 Dynamic Learning Resources

• 3D Simulation Video Library:

Access a treasure trove of educational resources, including:

- ▶ 3,000+ Videos
- ▶ 1,000 Simulations
- ▶ 20,000+ 3D Models
- ▶ Algebra Math Tools

Covering subjects like Math, Physics, Chemistry, Botany, Zoology, and more.

• Interactive Periodic Table:

Explore chemistry like never before with clickable elements that provide detailed information and stunning 3D atomic models.

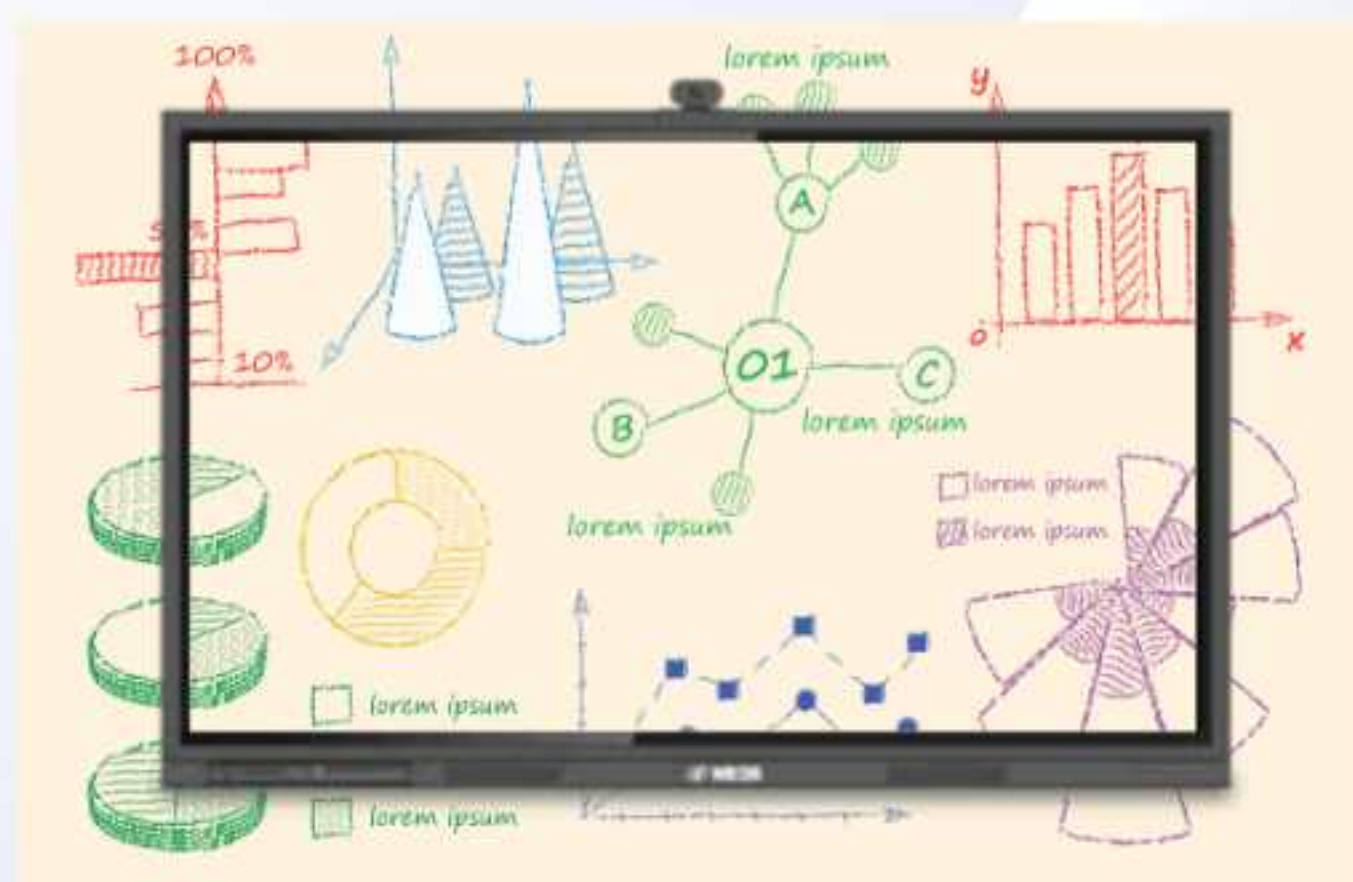
3 Engage and Assess Like Never Before

• Engaging Assessments:

Create interactive quizzes and activities that encourage active participation and comprehension.

• Infinity Canvas:

Inspire creativity with an unlimited canvas for endless exploration and idea expression.



DON'T MISS THE FEATURES LIKE



Screen Splitting

Boost productivity and teamwork with screen-splitting functionality, allowing multiple users to collaborate simultaneously for enhanced group interactions.



Real-Time Collaboration

Encourage creativity and engagement with real-time collaboration tools that enable seamless interaction between students and educators, fostering active learning.



Customizable Interface

Adapt the interface to meet your classroom's unique requirements, providing a personalized and user-friendly experience for both teachers and students.



Universal Compatibility

Experience effortless compatibility with Windows, Android, iOS, and web platforms, ensuring smooth integration across devices.

MODEL	NE-65TIW24MA	NE-75TIW24MA	NE-86TIW24MA
Display			
Active Screen Size	65"	75"	86"
Backlight	DLED		
Display Area (mm)	1428.48(H) × 803.52(V)	1649.664(H) × 927.936(V)	1895.04(H) × 1065.96(V)
Display Ratio	16:9		
Resolution	3840 x 2160		
Display Refresh Rate	60Hz		
Colors	1.07G (8bits + FRC)		
Brightness Center With Glass (Min)	400 cd/m²		
Contrast Ratio	4000:1	4000:1	4000:1
Response Time	8ms	6.5ms	8ms
Viewing Angle	H = 178, V = 178		
Life Time	≥50000 hours		
Glass Surface Technology			
Thickness	3.2mm H2		
Anti-Fingerprint	YES		
Anti-Glare	YES		
Touch Surface Hardness	8H		
Transparency	≥88%		
Haze	48		
Touch Technology			
IR Touch technology	IR		
Touch Android Points	40		
Touch Windows Points	40		
Response time (ms)	≤3.3ms		
Touch Frame Rate (Hz)	≥300Hz		
Accuracy (mm)	±1mm (Central 90% Area)		
Minimum Object Size	0.5mm to 3mm		
Recognizable Pen, Fingerprint, Palm	YES		
Stereo Speaker			
Speaker Rated Power Output	20W*2		
Network Module			
WIFI	WiFi6		
Bluetooth	BT5.2		
Smart System			
SoC Chipset	MT9679		
CPU	A73*4		
GPU	G52		
RAM	8 GB		
ROM	128 GB		
UI Resolution	4K		
Android Version	Android 14		
Front Control Panel			
Key Buttons	5* button: Power/Custom/Back/HomeMenu/		
IR Remote Sensor	YES		
Ambient Light Sensor	YES		
Lamp Status	Standby Mode:Red Light ,Working Mode: White Light		
Front Ports			
Input	Type-C (Full/PD-65W), HDMI IN 2.0, TOUCH USB2.0-B, USB 3.0-A Host Public, Microphone In (Line in)		
Rear Ports			
Input	HDMI 2.0 in, USB2.0 Type-C, USB2.0 Type-C for Camera (Top), USB 3.0-A to SOC, USB 2.0-A Host Public, TOUCH USB 2.0-B Device, VGA In, PC Audio In		
RS232-DB9	YES		
RJ45 (10/100/1000M)	YES		
OPS Slot (4K@60Hz)	Standby Mode:Red Light ,Working Mode: White Light		

MODEL	NE-65TIW24MA	NE-75TIW24MA	NE-86TIW24MA
-------	--------------	--------------	--------------

In Box			
Accessories	USB2.0 A-B Cable 3m, HDMI 2.0 Cable 3m, AC Power Cabel 2m, Simple Remote Controller, 3&10mm Dubble Poits Pens x 2, AAA Alkaline Battery x 2.		

Electrical Parameter			
AC Input	AC100-240V Max 10A		
Working Voltage	AC100-240V Max 3.5A	AC100-240V Max 3.4A	AC100-240V Max 4.5A
Power Consumption (Eco mode)	295W	286W	386W
Power Consumption (Full load)	325W	315W	425W
Power Consumption (Standby mode)	0.5W		

Mechanical			
Wall-Mounted By Landscape/Portrait	YES		
VESA Mounting (mm)	600*400	800*400	800*400
Handles	2	2	4

Regulatory and Compliance			
BIS	YES		

Transportation / Storage			
Working Temperature/Humidity	0~40°C 20~80%RH (Non-Condensing)		
Storage Temperature/Humidity	-10~45°C 20~90%RH (Non-Condensing)		
Outline Dimension (without wall mount) (mm)	1512.9x922.83x109.865	1735.05x1047.32x111.065	1981.04x1186.05x111.065
Packing Dimension (mm)	1640 x 208 x 1036	1859 x 227 x 1160	2119 x 250 x 1290
Net Weight (kg)	37	50	61.5
Gross Weight (kg)	46.5	62	77.5



OUR BRANCHES

PUNE HO

Survey No.33/1, Kondhwa Pisoli Road,
Pisoli, Pune - 411060. India

Tel: 022-35006868

MUMBAI

Orbit Plaza Co Operative Society, Unit No.
103 & 104, 1st Floor, New Prabhadevi Road,
Prabhadevi, Mumbai - 400025

Tel: 022-66268888

KOLKATA

122A, Southern Avenue, 6th floor,
Kolkata - 700029.

Tel: 033- 40301930/40301931

BANGALORE

Om Chambers, 3rd floor, 100 Feet Road,
Stage 1, Binnamangala, Indiranagar,
Bengaluru, Karnataka - 560038

Tel: 080-4111 3555

CHENNAI

3rd Floor, Unipunch Pride, 40, 2nd Main Rd,
G-2, Ambattur Industrial Estate,
Chennai - 600058

Ph: 044 40062828 / 23740037

DELHI

Unit No.822 & 823, 8th Floor, Prime Tower
Building, Okhla Industrial Area, Phase-I,
New Delhi - 110020

Tel: 011-48481200

HYDERABAD

H NO: 8-2-616/3/E/2, Flat No. 101, 1st Floor,
Manngalagiri Vinaygar APTS , Road. No. 10,
Banjara Hills, Hyderabad – 500034

Tel: 8008010000

AHMEDABAD

1002-1003, Sakar III, Near Income Tax
office, Ashram Road, Ahmedabad - 380014

Tel: 079-49004400

GUWAHATI

Room No 103, Mezzanine Floor, Orion
Tower, Christian Basti, Guwahati - 781005

Ph no. 9707826751

KOCHI

7th Floor, Alapatt Heritage Building, MG Road,
Kochi – 682035

PH: 9447711255

  +91 97644 47100  enquiry@arvindsyntel.com  www.arvindsyntel.com

